

OKLAHOMA DEPARTMENT OF TRANSPORTATION					
FED. ROAD DIST. NO.	STATE	JOB PIECE NO.	FISCAL YEAR	SHEET NO.	TOTAL SHEETS
6	OKLA.				
DESCRIPTION		REVISIONS		DATE	

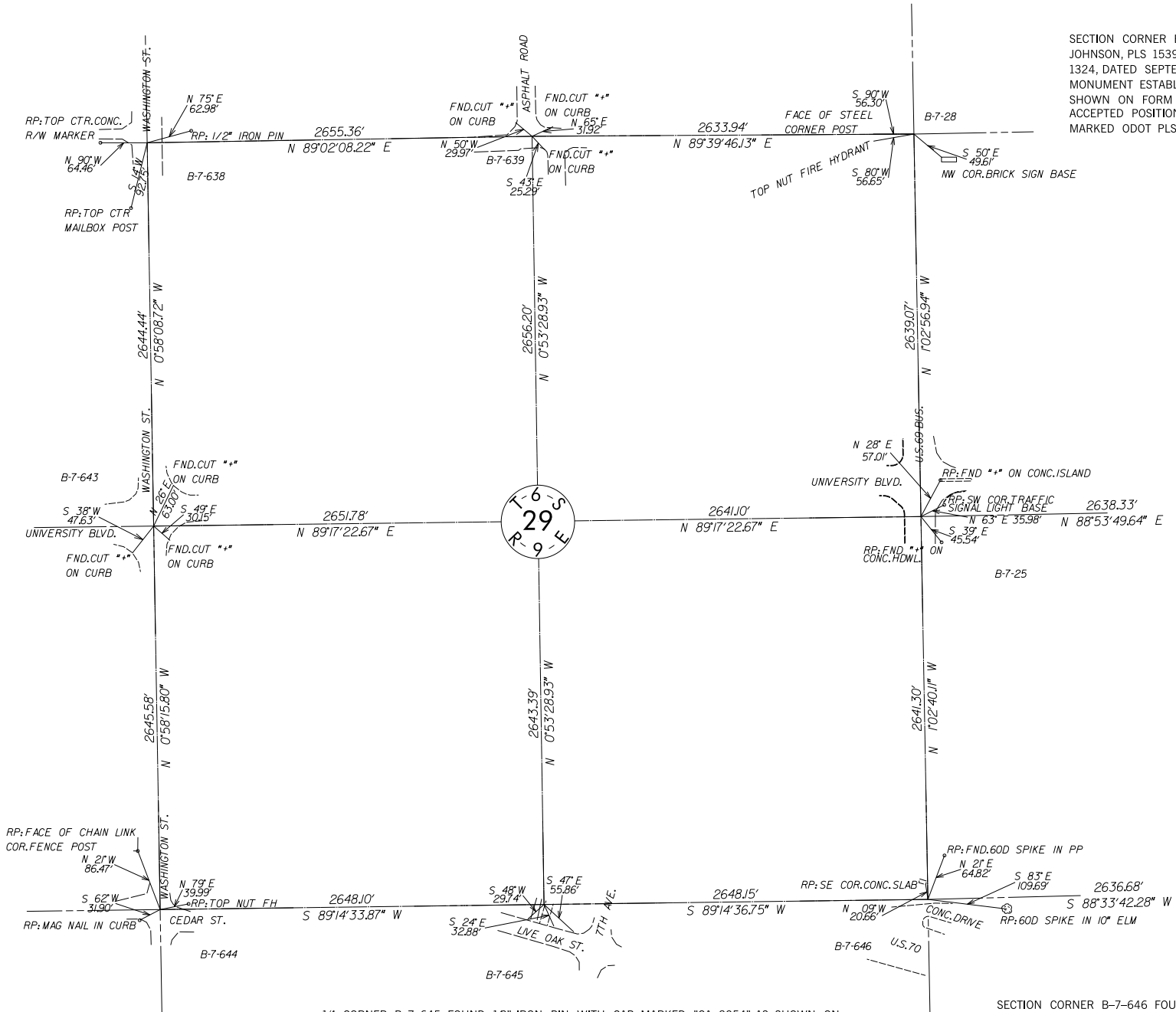
1/4 CORNER B-7-639 FOUND 1.5" PIPE AS DESCRIBED ON CCR FILED MARCH 26, 2007, BY ROBBY L. JOHNSON, PLS 1539. POSITION OF THIS PIPE FITS NUMEROUS MONUMENTS FOUND AT LOT CORNERS IN TWINOAKS ADDITION TO DURANT, OK, ACCORDING TO THE RECORDED PLAT THEREOF, SURVEYED AND SIGNED BY T.B. MATTHEWS ON MARCH 16, 1926. FOUND A PK NAIL WITH TAG MARKED PLS 1165 AS FILED BY DAVID PAGE, JR. AS THE SOUTH 1/4 CORNER OF SECTION 20, ON MARCH 26, 2007, 14.5' SOUTH AND 10.6' WEST OF PIPE. PK NAIL POSITION IS CLOSE TO BEING AT MIDPOINT BETWEEN SECTION CORNER MONUMENTS ONE-HALF MILE EAST AND ONE-HALF MILE WEST. ACCEPTED POSITION OF 1.5" PIPE AS MOST NEARLY REPRESENTING ORIGINAL POSITION OF CORNER, AND SET 80D SPIKE WITH WASHER MARKED "ODOT PLS 1561" AS ENDORSEMENT.

SECTION CORNER B-7-638 FOUND RAILROAD SPIKE AS SHOWN ON CCR FILED ON MARCH 26, 2007 BY ROBBY L. JOHNSON, PLS 1539, AND ON CCR FILED ON JANUARY 19, 2000, BY DAVID L. PAGE, PLS 1324. POSITION OF MONUMENT IS IN ACCORDANCE WITH POSITION OF OTHER LAND CORNERS AND WITH LOCAL EVIDENCE. ACCEPTED POSITION OF RAILROAD SPIKE AS FOUND, AND SET MAG NAIL WITH TAG MARKED "ODOT PLS 1561" AS ENDORSEMENT.

SECTION CORNER B-7-28 FOUND PK NAIL PER REFERENCES ON CCR FILED BY ROBBY L. JOHNSON, PLS 1539, DATED MARCH 30, 2007, AND ON CCR FILED BY DAVID PAGE, PLS 1324, DATED SEPTEMBER 5, 2000. POSITION AGREES WITH O.H.D. STANDARD BRASS MONUMENT ESTABLISHED UNDER SWO2834(1) BY RAY N. SEELEY, ODOT LOCATION ENGINEER, SHOWN ON FORM SD-11 DATED SEPTEMBER 20, 1968. ACCEPTED POSITION OF PK NAIL AS FOUND. REPLACED WITH MAG NAIL WITH WASHER MARKED ODOT PLS 1561.

1/4 CORNER B-7-643 FOUND ALUMINUM CAP AS SHOWN ON CCR FILED ON MARCH 26, 2007 BY ROBBY L. JOHNSON, PLS 1539. PREVIOUS CCR FILED ON JUNE 16, 2000, BY DAVID L. PAGE, PLS 1324, SHOWED "+" CUT IN CONCRETE. POSITION OF ALUMINUM CAP IS IN ACCORDANCE WITH OTHER LAND CORNERS AND WITH LOCAL EVIDENCE. MONUMENT ACCEPTED AND USED AS FOUND.

1/4 CORNER B-7-25 FOUND PK NAIL PER REFERENCES ON CCR FILED BY ROBBY L. JOHNSON, PLS 1539, DATED MARCH 30, 2007, AND PREVIOUS CCR FILED BY DAVID PAGE, PLS 1324, DATED SEPTEMBER 5, 2000. POSITION AGREES WITH O.H.D. STANDARD BRASS MONUMENT SET BY RAY N. SEELEY, ODOT LOCATION ENGINEER, ESTABLISHED UNDER SWO2834(1) AND SHOWN ON FORM SD-11, DATED SEPTEMBER 20, 1968. ACCEPTED POSITION OF PK NAIL AS FOUND. REPLACED WITH MAG NAIL WITH WASHER MARKED ODOT PLS 1561.



SECTION CORNER B-7-644 FOUND PK NAIL AS SHOWN ON CCR FILED ON MARCH 26, 2007 BY ROBBY L. JOHNSON, PLS 1539, AND ON CCR FILED ON JUNE 2, 2009, BY RANDY L. MARQUARDT, PLS 1432. POSITION OF PK ON JOHNSON CCR SHOWN TO BE IDENTICAL TO POSITION OF 1/4" IRON PIN FOUND AND REFERENCED BY DAVID L. PAGE, PLS 1324, ON CCR FILED MAY 22, 2000, AND REFILED ON AUGUST 8, 2000. POSITION OF PK NAIL FOUND IS IN ACCORDANCE WITH POSITION OF OTHER LAND CORNERS AND WITH LOCAL EVIDENCE. ACCEPTED POSITION OF PK NAIL AS FOUND, AND SET MAG NAIL WITH TAG MARKED "ODOT PLS 1561" AS ENDORSEMENT.

1/4 CORNER B-7-645 FOUND 12" IRON PIN WITH CAP MARKED "CA 2054" AS SHOWN ON CCR FILED MARCH 26, 2007, BY ROBBY L. JOHNSON, PLS 1539, AND SUBSEQUENTLY FILED ON JUNE 2, 2009, BY RANDY L. MARQUARDT, PLS 1432. POSITION OF PIN AGREES WITH MONUMENTS AT SECTION CORNERS ONE-HALF MILE EAST AND ONE-HALF MILE WEST, AND WITH LOCAL EVIDENCE. ACCEPTED POSITION OF IRON PIN AS FOUND FOR QUARTER-CORNER.

SECTION CORNER B-7-646 FOUND 3/8" IRON PIN SHOWN ON CCR AS SET BY DAVID PAGE, JR., PLS 1324, AND FILED ON JANUARY 19, 2005. PIN WAS SUBSEQUENTLY RECOVERED AND REFERENCED AS SHOWN ON CCRS FILED BY ROBBY L. JOHNSON, PLS 1539, ON MARCH 30, 2007, AND BY RANDY L. MARQUARDT, PLS 1432, ON JUNE 2, 2009. POSITION OF IRON PIN IS IN ACCORDANCE WITH SURROUNDING MONUMENTS AND WITH LOCAL EVIDENCE. ACCEPTED LOCATION OF IRON PIN AS FOUND, AND SET 60D SPIKE WITH WASHER MARKED ODOT PLS 1561 AS ENDORSEMENT.

SDS _____ OF _____

PLS				OKLAHOMA DEPARTMENT OF TRANSPORTATION	
DRAWN				SURVEY DIVISION	
CHECKED				SURVEY DATA SHEET	
APPROVED					
CREW					
				SWO 4811 (1) PROJECT NO. 27912(04) SHEET NO. S008	